

# UTR08b Heating Thermostat User Manual

## [ General ]


- Heating Thermostat with weekly programming adopts the latest single-chip computer control technology.
- It has the high reliability and powerful anti-jamming. It can realization energy-saving and comfortable living environment
- The application is the electric heating equipment and Water heating ystem of electric heating or actuator control. According to the preset temperature, the thermostat will automatically start and stop the controlled object (valve, floor heating, the heating wall, electric heater etc).
- Multiple time modes: 5+2/6+1/7days, the heating equipment supports different temperature setting accordingly with 6 time-modes daily. Users are free to choose manual mode or full automatic mode for different purposes.
- Using flame resistance material, the heating equipment is safe and reliable. Its appearance is stylish and its mirror screen would be very easy to clean.
- The clock would continue to run even if power was cut off and it will not affect the period setting value.
- Keypad locking function is designed to prevent the children from misusing.

## [ Technical parameters ]

- Power Supply: 85-250VAC 50/60 Hz
- Internal sensor measurement range: 0 - 40°C. Setting range: 5 - 35°C (factory settings: 25°C)
- Inside sensor: NTC B=3380 10k @25degrees Celsius
- Display type: LCD, Display area: 60 x 32 mm
- The maximum switch power: 2A/16A
- External sensor measurement range: 0 - 99°C. Setting range: 5 - 95°C (factory settings: 50°C)
- Extra sensor: NTC B=3380 10k @25 degrees Celsius, length=3 meters (optional)
- Display resolution: 0.1°C Setting Unit: 0.5°C/step



## Operation Guide

### [ On and off ]

Press  you can be turn on or turn off the thermostat power.

When thermostat is OFF, it display the air temperature and OFF. see the following



[ Lock ] Press key   for 2 seconds at the same time, the keypad is locked. LCD will show ---.

In the locked status, press the key   for 2 seconds, it will be unlocked.

### [ Temperature control mode ]

According to the sensor setting of thermostat, there are three different control modes, enter the advance function to set.

Internal control (IN): Only enable internal sensor to temperature measurement, that the temperature control basis from the internal temperature sensor. It is suitable for the detection of air temperature or the room temperature.

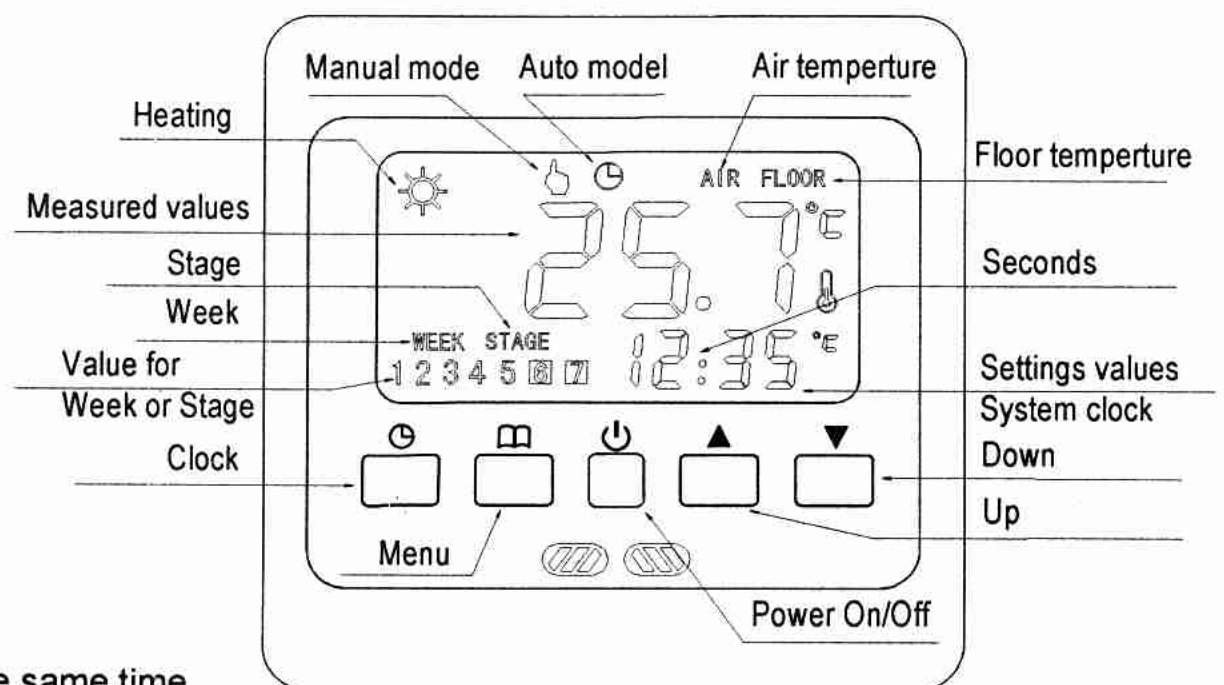
External control (OUT): Only enable external sensor to temperature measurement, that the temperature control basis from the external sensor. It is suitable for the detection of the heating body temperature.

Dual temperature control (ALL): Temperature control is based on the internal sensor (Temperature measurement) and external sensor (over-temperature protection). Adapted to detect the room temperature and is monitored whether the heating element over temperature. If the external sensor is over temperature, thermostat will shuts down the heater.

### [ Display three types of temperature ]

When the thermostat work in mode IN and mode ALL .The main screen shows air temperature or room temperature, when AIR icon will be lit. The vice-monitor would set temperature every 5 seconds and alternatively display current time.

When the thermostat works in OUT mode, the FLOOR icon will be lit. The main screen will display floor temperature or external sensor location temperature.



When the temperature is in mode **ALL**, press and can detect floor temperature or external sensor location, and the **FLOOR** icon will be lit. The main screen will automatically display air temperature 5 seconds later after the **AIR** icon lit.

## [ System time ]

How to set the system time: Keep pressing for 5 seconds, it will enter into the time setting. The current revisable object will flash and display. Press and choose time you want to revise (week / hour / minute), press or to modify the current setting. If you need to modify the previous parameters, please press key. After the modified minutes you can press to exit the system clock settings.

## [ Automatic / manual switch ]

Press you can choose the manual mode or automatic mode.

**Manual mode:** System will control temperature under the set value without any change.

**Automatic mode:** System would control temperature according to the preset temperature values in different time. The icon will lit, which means that the system is running under automatic mode. The **week** and **Stage** icon would alternately display every 5 seconds, **1-7** is systematic reuse. When screen shows **WEEK**, 1-7 would display the values of the week. When screen shows **STAGE**, 1-6 would display the current values.

## [ Setting the periods of time modes ]

The thermostat can't quit when you set the periods and it will automatically save data and exit when all setting is finished.

The periods setting can realize the control of temperature and time under automatic mode. Once setting up, the values could be saved and reused in the thermostat forever.

The thermostat can save three kinds of schedules (5+2 / 6+1 / 7) in 6 periods; One week for a cycle.

Each data is saved as the start time (hours: minutes) and the temperature values of this period. The end time of the period would be saved as the start time of next period. You can also shut down a certain period according to your needs.

Press the for 5 seconds, you will enter into the period setting interface. The number is blinking in WEEK area, it means the mode of your set (5+2 or 6+1 or 7). You can press button to select the object you want to modify (the period start time: hours, minutes and set temperature). Press or to modify the value. If you want to turn off a period, please press until the **OFF** shows.

For example: in the 5+2 mode, the period setting sequence:

Press 5s, the week area will blinking 1-5, Reference on the right Image

P1:hr>min>setting value-> P2:hr>min>setting value-> P3:hr>min>setting value->...-

> P6:hr>min>setting value The week area will auto change 6-7 and blinking.

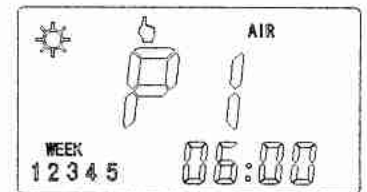
P1:hr>min>setting value-> P2:hr>min>setting value-> P3:hr>min>setting value->...-> P6:hr>min>setting value

Total setting value is 12 sets (<5>P1-P6,<2>P1-P6), you will setting 12X3 values. If you want skip the setting item you can press , You can use the to back to the previous setting.

The automatic default mode of the machine factory is 5+2 mode. Time specific data see the following table. You can modify when you enter the programming interface:

5+2 mode	ID	P1	P2	P3	P4	P5	P6
Monday to Friday	Start time	06:00	08:00	11:30	12:30	17:00	22:00
	Set value	22°C	15°C	15°C	15°C	22°C	15°C
Saturday to Sunday	Start time	06:00	08:00	11:30	12:30	17:00	22:00
	Set value	22°C	15°C	15°C	15°C	22°C	15°C

For example: in the automatic mode, when the system time for the Friday 08:20, display will show: **WEEK 5** or **STAGE 2** and the setting temperature value of 15 degrees.



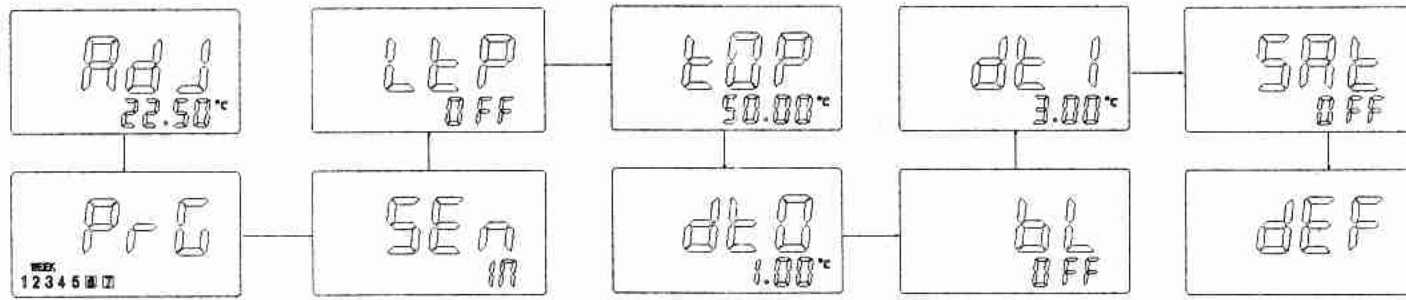
## [ Advanced function setting ]

**Warning: System setting is used to set some important parameters of the system, that's only for professionals. Do not make any improper modification. The item already been debugged and tested by professionals, there is no need to reset.**

**Enter the advanced function setting:** Press the to switch off the thermostat. Display will show "OFF". Press again, it will turn on. Please press Key in next second, it will into the advanced function setting. You can press to switch the system parameters. At the same time, press the or with the parameters to modify settings. Select a set of content. If you do not by the or , the parameters will not modified. If you want to save the data, you must go through all the functions and exit the system menu.

**The system parameters according to the following order: Adj>PrG>LtP>SEn>Top>dt0>dt1>bL>Sat>dEF**

The thermostat's display type is LCD segment displaying. There are some different for the display value and practical value. Please refer to the specific figure:



Display	Set the content	Adjustment range	The default value
Adj	temperature correction	-5°C ~ 5°C	-2.5°C
	It is used to correct the error, the measured values of the sensor. When you set it, the LCD displays the correction value. After three seconds, the LCD displays the measured value after correction.		
PrG	The period-time mode	5+2 / 6+1 / 7	5+2
	5+2: Monday to Friday to set the same and Saturday to Sunday to set the same 6+1: Monday to Saturday to set the same, Sunday is independent 7: Monday to Sunday is same setting value.		
LtP	Antifreeze	On: Enable / OFF: Disable	OFF
	Low temperature protection, what is suitable for the water system To prevent the pipe at low temperature was freezing.		
SEn	Sensor or temperature control mode	IN: Built-in OUT: External ALL: Dual temperature control	IN
	IN: internal control, room sensor Out: external control, floor sensor ALL: double temperature double control, the internal room temperature sensor, external sensor overheating protecting		
tOP	External temperature sensor limit	40-80°C	50°C
	The sensor is set to ALL, the temperature limit external sensor value		
dt0	Internal sensor hysteresis	0.5-4°C	1°C
	Built-in temperature sensor hysteresis		
dt1	External sensor hysteresis	0.5-5°C	3°C
	External temperature sensor hysteresis		
bL	Backlighting status	On: Always on OFF: Auto turn off after 5sec	OFF
	Backlight lighting mode, can be set according to personal preference		
Sat	Status at re-power	OFF: off status at every time On: the same as previous,	OFF
	Used to control the power state of the boot		
dEF	Restore factory settings	Restore factory settings	To restore the default settings

**[ The error and solution of common system ]**

**1. No display**

- Power supply system is having problems or power is supplied incorrectly, please check if the inlet wire is normal.
- If the connection is not right, please wired up as the wiring diagram on the back side.
- The thermostat of the working environment temperature is too low, please note the thermostat temperature range. If the temperature is lower than -5 °C, the thermostat cannot normally display.
- Power supply box and the motherboard Coupling is not connected correctly, please connect correctly.
- Power supply box and the motherboard Coupling is opposite inserted, please mind the direction
- Power supply box and the motherboard Coupling is broken, please don't overexert. Coupling length is 6cm, the installation must be careful. If damaged, no warranty and replacement

**2. Display rupture**

Display encounters hard objects or sudden force, no replacement and warranty

### 3. Display a black screen

If the display surface temperature is too high, please note whether there is heater nearby, if so please remove.

### 4. Display ER0

If internal sensor is abnormal, please pay attention to whether the small black dot in temperature sensing window damaged during removal

### 5. Display ER1

The system is set in the dual temperature control (ALL) mode, or it is not connected with an external sensor, or the external sensor is abnormal.

### 6. No pen on LCD

Please check whether the iron plate is deformation when installation. If it is deformation, please correct it.

### 7. No backlight

Please check backlight cable is pulled off the panel was removed.

### 8. Backlight always bright

- 1、 It is set bL is ON in the system menu
- 2、 It is damaged, please replace it.

### 9. Large deviation of measurement temperature and the actual temperature

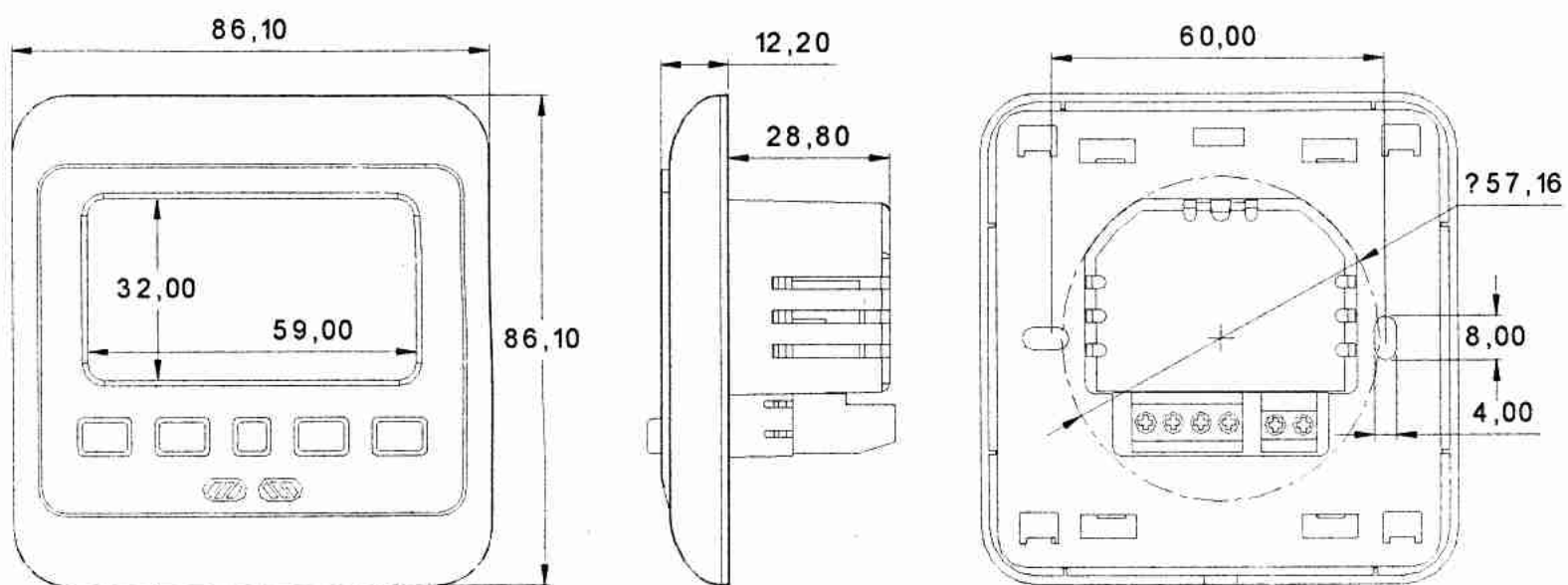
- 1、 The thermostat should be installed at ventilated place.  
It cannot be installed at the place in direct sunshine or nearby the heater
- 2、 Back connection screw is not locked, causing terminal serious fever

### 10. Display 0 degrees

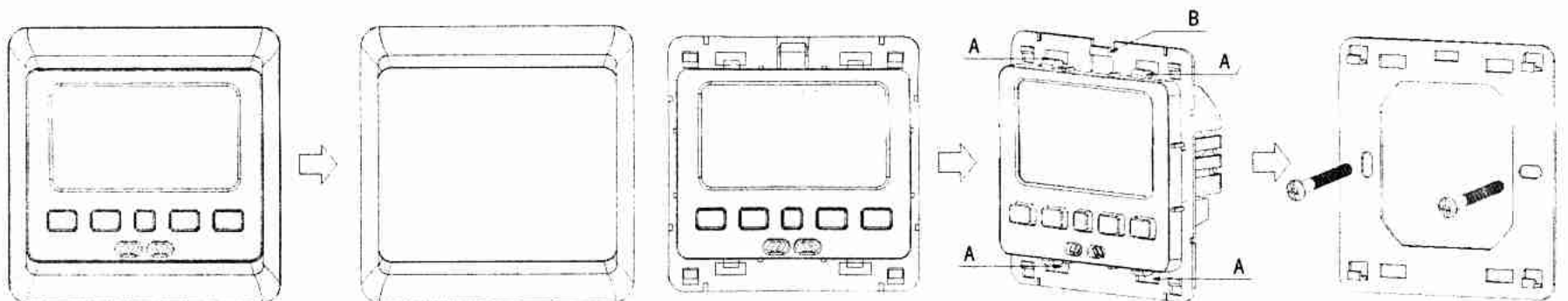
When the thermostat of the working environment temperature below the detection 0 degrees, that display 0 degrees..

The above is some of the most common errors, if you can't solve, please contact the local dealer!

## [ Dimension in mm ]



## [ Installation Diagram ]



Step 1: Separate the Polycarbonate Bezel unit from the LCD screen.

Step 2: In Laka buckle, outside at the same time lift up the movement, it is necessary to separate the iron with the movement.

Step 3: Fixing plate with screws to the wall to ensure that the de-energized state product back wiring diagram connected electrical lines.

Combinations: Align the four hooks, press down on the movement, the iron plate with movement combinations, and then fasten the frame