

EBERLE

Flush mounted floor heating controller with remote sensor FRe 525 22



Features:

- Controller for electrical floor heating and floor conditioning systems
- Conduit box mounting 60 mm
- Temperature set-back with external timer possible
- Monitoring set-back temperature operation via LED
- Quick connection/wiring via plug-in terminals
- Range limitation inside setting knob
- Aesthetically designed housing in polarwhite colour RAL 9010

Technical data

Controller

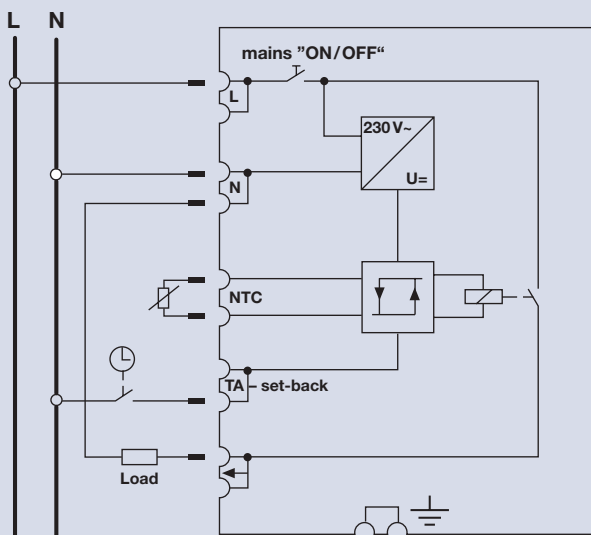
Type	FRe 525 22	
Article no. (incl. sensor)	0525 22 141 500	
Operating voltage	230 V AC 50 Hz (AC 195...253 V 50 Hz)	
Temperature range	✱...5 (Δ 10...50 °C)	
Switching current	10 A $\cos \varphi = 1$; 4 A $\cos \varphi = 0,6$	
Switch	Mains "ON/OFF"	
Indicators	LED red	Calling for heat
	LED green	Set-back "ON"
Output	Relay n/o-contact, not voltage free	
Temperature set-back (TA)	~ 5 k	
Hysteresis	~ 1 k	
Protection class of housing	IP 30	
Operating temperature	0...40 °C	
Storing temperature	-25 to +70 °C	

Remote Sensor

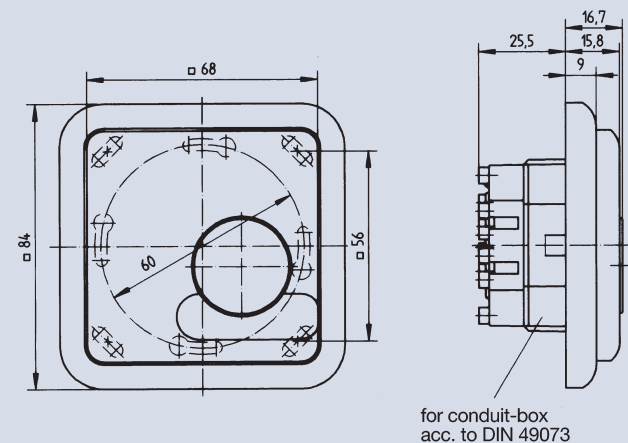
Type	F 193 720 , included in delivery F 190 021 optional, extendable to max. 50 m
Protection class	IP 67
Operating temperature	-20 to +70 °C

* The sensor cable can be lengthed up to 50 m by using a 2-core cable for mains voltage. In case of laying the sensor cable in cable channel or parallel to power lines use shielded cable. For easier exchange, the sensor should be laid in a protection pipe.

Wiring diagram:



Dimensions:



Sensor:

